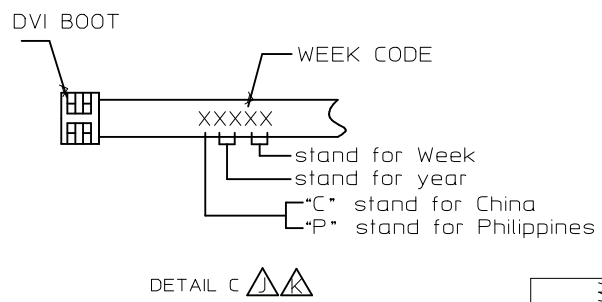
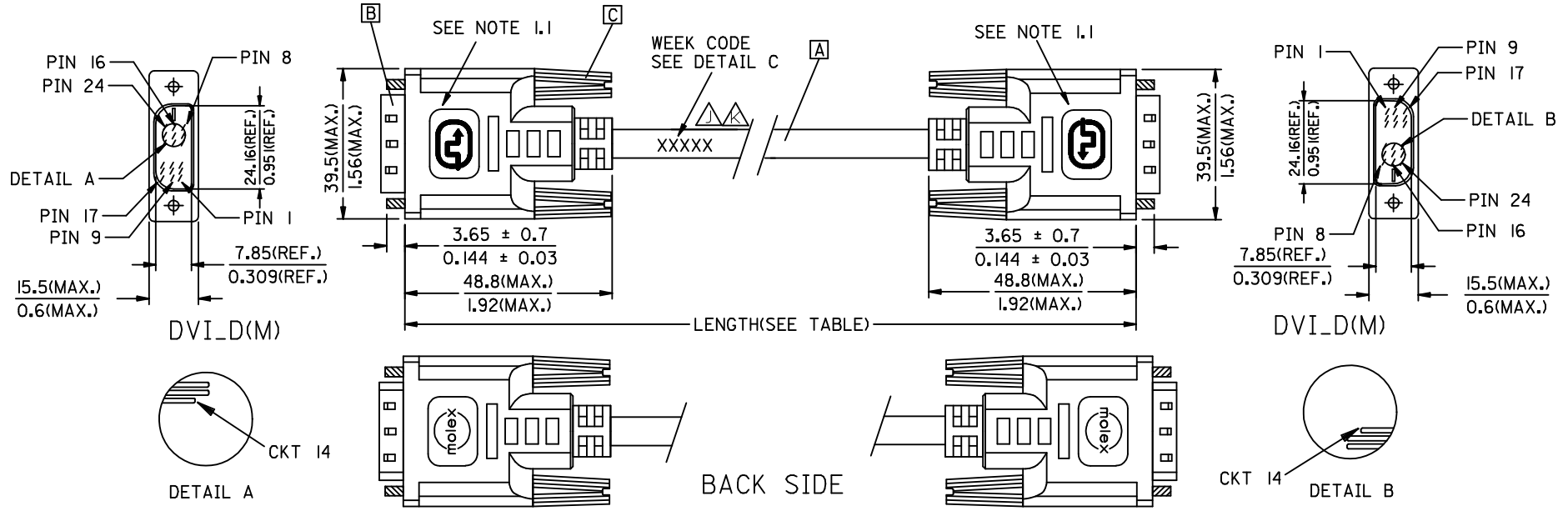


| REVISIONS | | | | |
|-----------|------------|-----|--|---------|
| EC NO | DATE | REV | DESCRIPTION | CHANGER |
| CY14-5154 | 2013/08/30 | J | CHANGE THE LABELING CONTENT FOR PRODUCTS TRANSFER TO PHILIPPINES | AHOU |
| CY14-5301 | 2013/09/12 | K | CHANGE THE LABELING CONTENT FOR PRODUCTS TRANSFER TO PHILIPPINES | AHOU |



| | | | | | |
|---|---------------|--|---------------------------|--------------------|------------------|
| ▲ | 88741-8021 | DVI_D-DVI_D SINGLE LINK CABLE 5M PARCHMENT WHT | 5000 ± 150 196.9 ± 5.9 | PARCHMENT WHITE | 887808287 |
| ▲ | 88741-8011 | DVI_D-DVI_D SINGLE LINK CABLE 3M PARCHMENT WHT | 3000 ± 80 118.1 ± 3.1 | PARCHMENT WHITE | 887808287 |
| ▲ | 88741-8001 | DVI_D-DVI_D SINGLE LINK CABLE 2M PARCHMENT WHT | 2000 ± 60 78.7 ± 2.4 | PARCHMENT WHITE | 887808287 |
| ▲ | 88741-8020 | DVI_D-DVI_D SINGLE LINK CABLE 5M BLK | 5000 ± 150 196.9 ± 5.9 | BLACK | 887808276 |
| ▲ | 88741-8010 | DVI_D-DVI_D SINGLE LINK CABLE 3M BLK | 3000 ± 80 118.1 ± 3.1 | BLACK | 887808276 |
| ▲ | 88741-8000 | DVI_D-DVI_D SINGLE LINK CABLE 2M BLK | 2000 ± 60 78.7 ± 2.4 | BLACK | 887808276 |
| | MX P/N | DESCRIPTION | LENGTH | CABLE COLOR | CABLE P/N |

| | | | | | | | | | |
|--|---|--|----------------------|----------------------------------|------------|---|-------------------------------|--|------------------------|
| ENTER DESCRIPTION EC NO: CPG2014-0796 DRWN: XJGU001 CHKD: AHOU APPR: XAWANG | QUALITY SYMBOLS $F_A = 0$ $F_B = 0$ $F_P = 0$ | GENERAL TOLERANCES (UNLESS SPECIFIED) | | DIMENSION STYLE MM/IN | | SCALE | DESIGN UNITS METRIC | | THIRD ANGLE PROJECTION |
| | | mm | INCH | DRAWN BY | DATE | TITLE DVI_D-DVI_D S.LINK CBL | | | |
| | | 4 PLACES ± --- ± --- | 3 PLACES ± --- ± --- | XJGU001 | 2013/09/06 | | | | |
| | | 2 PLACES ± --- ± --- | 1 PLACE ± --- ± --- | CHECKED BY | DATE | molex | | | |
| 0 PLACE ± --- ± --- | | JASON | 2013/09/06 | | | | | | |
| DRAFT WHERE APPLICABLE MUST REMAIN WITHIN DIMENSIONS | | ANGULAR ± ---° | | APPROVED BY XAWANG | | DATE | DOCUMENT NO. SD-88741-001 | | SHEET NO. 1 OF 2 |
| K | | REV | | MATERIAL NO. SEE TABLE | | THIS DRAWING CONTAINS INFORMATION THAT IS PROPRIETARY TO MOLEX INCORPORATED AND SHOULD NOT BE USED WITHOUT WRITTEN PERMISSION | | | |

NOTE: 1. OVERMOLD SPECIFICATION

- 1.1 DVI BOOT MOLDED WITH SNOW WHITE PVC RESIN P/N IS 887800076.
- 1.2 UL94V-0, COLOR: MAD432
- 1.3 HARDNESS (DUROMETER): SHORE A 90-95
- 2. MECHANICAL SPECIFICATION
 - 2.1 CABLE SHOULD STAND THE PULL FORCE 89-111N FOR 30 SECONDS WITH NO VISIBLE TERMINATION DAMAGE.
 - 2.2 CABLE SHOULD PASS THE FLEX TEST IN 100 CYCLES AT EACH OF PLANES, PER EIA 364-41, CONDITION 1.
- 3. CABLE ELECTRICAL SPECIFICATION
 - 3.1 DIELECTRIC STRENGTH: 300VDC FOR 10mS.
 - 3.2 INSULATION RESISTANCE: 20 MEGA Ohms
 - 3.3 DIFFERENTIAL LINES CHARACTERISTIC IMPEDANCE: 100±7 Ohms@TDR.
- 4. DVI CONNECTOR SPECIFICATION
 - 4.1 REFER TO PRODUCT SPEC. PS74320-0001.
 - 4.2 CONTACT PLATING: AU FLASH.
- 5. SHORTCIRCUIT AMONG DRAIN WIRES IS ACCEPTABLE.
- 6. THIS PRODUCT MUST MEET MX RoHS COMPLIANCE.

7. CONNECTION DIAGRAM

| SHIELD | SHIEDL | GROUND |
|--------|--------|------------------------|
| PIN 24 | PIN 24 | TMDS CLOCK- |
| PIN 23 | PIN 23 | TMDS CLOCK+ |
| PIN 22 | PIN 22 | TMDS CLOCK SHIELD |
| PIN 19 | PIN 19 | TMDS DATA 0 SHIELD |
| PIN 18 | PIN 18 | TMDS DATA 0+ |
| PIN 17 | PIN 17 | TMDS DATA 0- |
| PIN 16 | PIN 16 | HOT PLUG DETECT |
| PIN 15 | PIN 15 | GROUND(+5V & HV SYNC.) |
| PIN 14 | PIN 14 | POWER +5V |
| PIN 11 | PIN 11 | TMDS DATA 1 SHIELD |
| PIN 10 | PIN 10 | TMDS DATA 1+ |
| PIN 9 | PIN 9 | TMDS DATA 1- |
| PIN 7 | PIN 7 | DDC DATA |
| PIN 6 | PIN 6 | DDC CLOCK |
| PIN 3 | PIN 3 | TMDS DATA 2 SHIELD |
| PIN 2 | PIN 2 | TMDS DATA 2+ |
| PIN 1 | PIN 1 | TMDS DATA 2- |
| DVI_D | DVI_D | CABLE FUNCTION |

8. MATERIAL LIST

| ITEM | DESCRIPTION |
|------|--|
| C | DVI THUMB SCREW 887806077 |
| B | DVI_D SINGLE CHANNEL G/F CONNECTOR 743230101 |
| A | DVI SINGLE LINK CABLE (SEE TABLE) |

| | | | | | | | | | | |
|--|--------------------------------------|---------------------------------------|-------------|--------------------------|--------------|--|---|------------------------|--|--|
| ENTER DESCRIPTION EC NO: CPG2014-0796 DRWN: XJGU001 CHKD: AHO APPR: XAWANG 2013/09/14 2013/09/14 2013/09/14 | QUALITY SYMBOLS F=0 F=0 F=0 | GENERAL TOLERANCES (UNLESS SPECIFIED) | | DIMENSION STYLE MM/IN | | SCALE | DESIGN UNITS METRIC | THIRD ANGLE PROJECTION | | |
| | | 4 PLACES | ± --- | ± --- | DRAWN BY | DATE | TITLE DVI_D-DVI_D S.LINK CBL <div style="text-align: center; font-size: 24px; font-weight: bold;">molex</div> DOCUMENT NO. SD-88741-001 SHEET NO. 2 OF 2 | | | |
| | | 3 PLACES | ± --- | ± --- | CHECKED BY | DATE | | | | |
| | | 2 PLACES | ± --- | ± --- | JASON | 2013/09/06 | | | | |
| 1 PLACE | ± --- | ± --- | APPROVED BY | DATE | | | | | | |
| 0 PLACE | ± --- | ± --- | XAWANG | 2013/09/12 | MATERIAL NO. | | SEE TABLE | | | |
| K | | REV | | ANGULAR ± ---° | | DRAFT WHERE APPLICABLE MUST REMAIN WITHIN DIMENSIONS | | | | |

OTE:1. OVERMOLD SPECIFICATION

- 1.1 DVI BOOT MOLDED WITH SNOW WHITE PVC RESIN P/N IS 887800076.
- 1.2 UL94V-0, COLOR: MAD432
- 1.3 HARDNESS (DUROMETER): SHORE A 90-95

2. MECHANICAL SPECIFICATION

- 2.1 CABLE SHOULD STAND THE PULL FORCE 89-11IN FOR 30 SECONDS WITH NO VISIBLE TERMINATION DAMAGE.
- 2.2 CABLE SHOULD PASS THE FLEX TEST IN 100 CYCLES AT EACH OF PLANES, PER EIA 364-4I, CONDITION I.

3. CABLE ELECTRICAL SPECIFICATION

- 3.1 DIELECTRIC STRENGTH: 300VDC FOR 10mS.
- 3.2 INSULATION RESISTANCE: 20 MEGA Ohms
- 3.3 DIFFERENTIAL LINES CHARACTERISTIC IMPEDANCE: 100±7 Ohms@TDR.

4. DVI CONNECTOR SPECIFICATION

- 4.1 REFER TO PRODUCT SPEC. PS74320-000I.
- 4.2 CONTACT PLATING: AU FLASH.
- 5. SHORTCIRCUIT AMONG DRAIN WIRES IS ACCEPTABLE.

6. THIS PRODUCT MUST MEET MX RoHS COMPLIANCE.

7. CONNECTION DIAGRAM

| SHIELD | SHIEDL | GROUND |
|--------|--------|------------------------|
| PIN 24 | PIN 24 | TMDS CLOCK- |
| PIN 23 | PIN 23 | TMDS CLOCK+ |
| PIN 22 | PIN 22 | TMDS CLOCK SHIELD |
| PIN 19 | PIN 19 | TMDS DATA 0 SHIELD |
| PIN 18 | PIN 18 | TMDS DATA 0+ |
| PIN 17 | PIN 17 | TMDS DATA 0- |
| PIN 16 | PIN 16 | HOT PLUG DETECT |
| PIN 15 | PIN 15 | GROUND(+5V & HV SYNC.) |
| PIN 14 | PIN 14 | POWER +5V |
| PIN 11 | PIN 11 | TMDS DATA 1 SHIELD |
| PIN 10 | PIN 10 | TMDS DATA 1+ |
| PIN 9 | PIN 9 | TMDS DATA 1- |
| PIN 7 | PIN 7 | DDC DATA |
| PIN 6 | PIN 6 | DDC CLOCK |
| PIN 3 | PIN 3 | TMDS DATA 2 SHIELD |
| PIN 2 | PIN 2 | TMDS DATA 2+ |
| PIN 1 | PIN 1 | TMDS DATA 2- |
| DVI_D | DVI_D | CABLE FUNCTION |

8. MATERIAL LIST

| ITEM | DESCRIPTION |
|------|--|
| C | DVI THUMB SCREW 887806077 |
| B | DVI_D SINGLE CHANNEL G/F CONNECTOR 743230101 |
| A | DVI SINGLE LINK CABLE (SEE TABLE) |

| | | | | | | | | | | | |
|--|--|--|---------------------------------------|------------|--|------------|---------------------------------|------------------------|---|--|--|
| ENTER DESCRIPTION EC NO: DG2006-0186 DRWN: PDAI CHKD: APPR: TKAN | 2006/03/09 2006/03/09 2006/03/10 | QUALITY SYMBOLS ▽=0 ▽=0 | GENERAL TOLERANCES (UNLESS SPECIFIED) | | DIMENSION STYLE MM/IN | | SCALE --- | DESIGN UNITS METRIC | THIRD ANGLE PROJECTION | | |
| | | | mm | INCH | DRAWN BY | DATE | TITLE DVI_D-DVI_D S.LINK CBL | | | | |
| | 4 PLACES | | ± --- | ± --- | PDAI | 2006/03/07 | | | | | |
| | 3 PLACES | | ± --- | ± --- | CHECKED BY | DATE | MOLEX MOLEX INCORPORATED | | | | |
| 2 PLACES | ± --- | ± --- | TEDDY | 2006/03/07 | | | | | | | |
| 1 PLACE | ± --- | ± --- | APPROVED BY | DATE | MATERIAL NO. DOCUMENT NO. SHEET NO. SEE TABLE SD-88741-001 2 OF 2 | | | | | | |
| ANGULAR ± ---° | | DRAFT WHERE APPLICABLE MUST REMAIN WITHIN DIMENSIONS | | SIZE | | | | | THIS DRAWING CONTAINS INFORMATION THAT IS PROPRIETARY TO MOLEX INCORPORATED AND SHOULD NOT BE USED WITHOUT WRITTEN PERMISSION | | |
| | | | | A 4 | | | | | | | |